

# FLUIDRA



## 2021 SPECIALTY GUIDE

for Backyard Living



COVERPOOLS®





# BUILD YOUR DREAM BACKYARD OASIS

A pool isn’t just a pool. It’s an investment in the quality of your lifestyle.

Why settle for a basic swimming pool, when you can add features that enhance safety, energy-efficiency and the overall aesthetics of your backyard living experience? When building a pool, it’s important to think long-term because it’s easier to incorporate these features into a pool design from the start rather than adding them on later.



Grand Effects® transforms ordinary pools and landscapes into extraordinary designs with beautifully handcrafted fire and water elements.



Jandy® Water Features add a soothing ambiance and a splash of elegance to your pool and spa with various waterfalls, and jets for infinite combinations of dazzling effects.



Cover-Pools® provides peace of mind with automatic pool covers that not only offer safety for children and pets, but allow you to save money by retaining heat, reducing chemical costs and preventing water loss due to evaporation.



Jandy In-Floor Cleaning is an in-floor automatic pool and spa cleaning system that’s custom designed for each pool so it can efficiently clean itself and better circulate the water for more efficient heating and sanitization.



GRAND EFFECTS ESSEX FIRE BOWL AND JANDY WATER FEATURES



## CONTENTS

- 5 Grand Effects® Burners
- 6 Grand Effects Fire Bowls
- 7 Grand Effects Fire & Water Features
- 8 Grand Effects Fire Features
- 10 Grand Effects Water Features
- 11 Grand Effects Media & Finishes
- 12 Jandy® Waterfalls
- 14 Jandy Water Features
- 16 Cover-Pools® Savings
- 18 Cover-Pools Shapes
- 20 Cover-Pools Motor & Mechanism
- 21 Cover-Pools Fabrics
- 22 Cover-Pools Lids & Benches
- 24 Jandy In-Floor Cleaning
- 26 Jandy In-Floor Products



# DESIGNED TO INSPIRE

## EXCEPTIONAL BACKYARDS BEGIN WITH EXTRAORDINARY EFFECTS

Grand Effects® transforms ordinary pools and landscapes into the extraordinary with beautifully handcrafted fire and water elements that create excitement and a rich luxurious ambiance to backyard designs. Available in a variety of sizes, shapes, materials and finishes to reflect any style – each exquisite fire, water or combination fire & water element will elevate your outdoor space and provide long lasting enjoyment, whether entertaining or creating life-long memories with the family.



## BEST BURNERS IN THE BUSINESS

For spectacular designs with fire, your best bet is Grand Effects®. Our premium and standard burners provide unmatched flame formation and functionality.

### Failsafe Flame

All automated burners feature our exclusive CSA certified SmartSense automated technology which produces a flame that holds steady in the wind and provides advanced flame detection that senses if the flame has gone out and rapidly shuts off the gas in response.

### Reliable Operation

Advanced engineering and a compact, insulated design helps to keep electronics from overheating, so you can count on dependable performance that keeps the flame burning and the water flowing day-in and day-out.



MODEL 100-9



MODEL 50-12

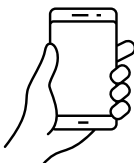
#### PREMIUM BOWL BURNER

- SmartSense Automated Technology\*
- Reliable Operation
- Fullest, Tallest, Most Impressive Flame
- Easy Manual Operation or Automated Control
- 3-Year ProEdge® Limited Warranty
- 2-Year ServicePro™ Limited Warranty
- 1-Year Standard Limited Warranty

#### STANDARD

- SmartSense Automated Technology\*
- Reliable Operation
- Lower, Broader Flame
- Automated Only
- 1-Year Limited Warranty

\*Not available for manual operation.



### Automation Ready

Grand Effects® products work with any home or pool automation system, including Jandy® AquaLink® automation systems. Our technology is reliable and proven and comes as an ETL listed packaged unit, factory tested and easy to install.



# FIRE FEATURES

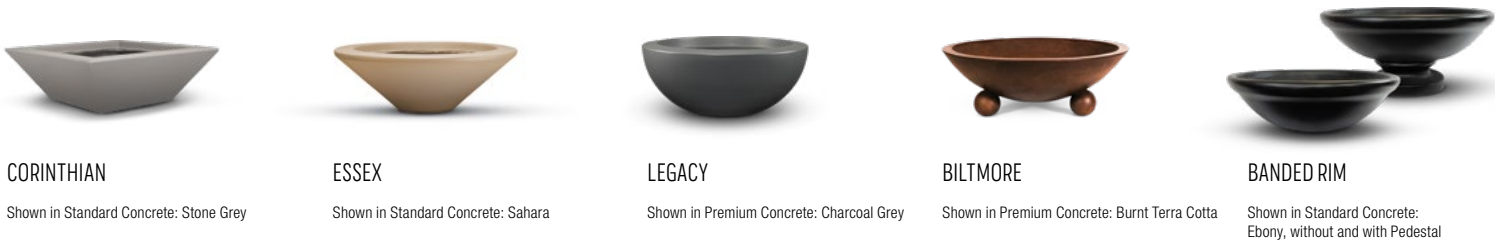
Bring your backyard to life with enthralling flames that dance on water and flicker in the night.



## FIRE BOWLS

For added flare and drama, fire bowls create a magnificent effect. Our top-of-the-line CSA certified burner with SmartSense automated technology produces the tallest, most impressive flame on the market.

- Available with SmartSense automated technology or manual operation
- CSA certified burner assembly and control panel
- Natural gas or propane: 60,000 – 80,000 BTU/hr



## FIRE & WATER BOWLS

Bring the elements of fire and water together in one alluring feature for an enchanting effect backed by our proprietary CSA certified burner with SmartSense automated technology

Choose from our collection of decorative bowls made from handcrafted copper, metallic or concrete.

- Available in Corinthian, Essex, Legacy and Biltmore styles
- Natural gas or propane – 60,000 – 80,000 BTU/hr
- 30-50 GPM water flow



## 360° FIRE & WATER BOWLS

Make your pool design more magical with an astonishing focal point that seemingly floats atop a cascading circle of water.

- Available in Essex, Legacy and Biltmore styles
- Available with SmartSense automated technology
- CSA certified burner assembly and control panel
- Natural gas or propane – 60,000 – 80,000 BTU/hr
- 30-50 GPM water flow



**ALL FIRE PRODUCTS ARE  
AUTOMATION READY**  
See page 5.





Grand Effects® has developed a beautiful line of Fire Pits that will enhance any landscape design. Manufactured with the highest quality, our decorative pieces come handmade in copper or GFRC concrete.

- CALDERA

Available only with Oil-Rubbed  
Copper Table and Premium  
Concrete Dark Walnut Bowl



Shown in Standard Concrete: Beechwood



Shown in Premium Concrete:  
Burnt Terra Cotta



Shown in Premium Concrete: Dark Walnut



Shown in Standard Concrete: Ebony



Shown in Premium Concrete: Sequoia

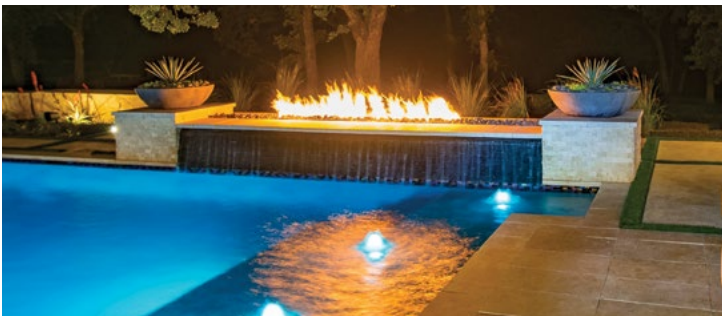


Shown in Standard Concrete: Ebony



## for Custom Applications

- All of our Linear Burners use a CSA certified burner system. Available in 3- to 10-foot lengths. Custom lengths and shapes are available on request.



## by Travis

The design of the torch head incorporates venturi technology to create a dramatic spiraling flame. Housed within high temperature glass panels to create a beautiful combination of function and design.



SQUARE STONE CANDELERE SHOWN WITH CONCRETE BASE

Our handcrafted white quartz stone Candeleros are pieced together using a beautiful marquetry inlay technique. When lit with standard white LED lights, these elegant quartz stone Candeleros come alive with a majestic translucent radiance.





# WATER FEATURES

Transform your backyard into a peaceful oasis accented by the soothing serenade of running water with water bowls, waterfalls, and scuppers, from which an elegant sheet of water flows.



## FREE STANDING DECK-MOUNT WATERFALLS

Relax and unwind to the rhythmic rush of elegant and modern waterfall perched atop your pool deck like a sculptural stainless-steel spout.



AURA



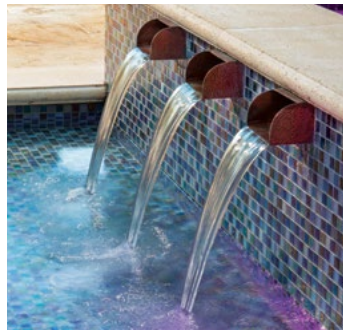
ESCALA



CAMBRÉ



MODERNO



## WATER SCUPPERS

Grand Effects® Water Scuppers come with a rich oil-rubbed finish. They are easy to install and provide an elegant stream of water.

- 15 GPM
  - Easy to install
- See all options on [GrandEffects.com](https://www.GrandEffects.com)



## WATER BOWLS

Create a mesmerizing sense of ambiance and tranquility in your backyard with exquisite cascading water elements. Choose from Essex, Biltmore, Corinthian and Legacy styles.

# DECORATIVE FIRE MEDIA

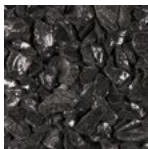
## FIRE GLASS

Enhance your Grand Effects® natural gas Fire features with decorative and captivating jewel-like Fire Glass.

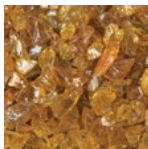
Glass media cannot be used with Propane Gas.

### Standard Fire Glass

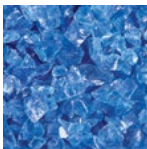
Available in 1/2" to 3/4" sizes with non-reflective finish



BLACK



CHESTNUT



OCEAN BLUE



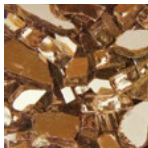
TURQUOISE BLUE

### Reflective Fire Glass

Available in 1/4" size with reflective finish



BLACK



COPPER



ROYAL BLUE



BLUE LAGOON

## LAVA ROCK & CERAMIC STONE

For a more rustic appearance, surround your Grand Effects® fire features with natural looking lava rocks and ceramic stones both artfully designed to withstand the heat and elevate your pool design.



CERAMIC STONE  
2-3" PIECES | BLACK



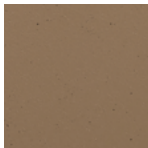
LAVA ROCK  
2-5" PIECES | BLACK



TUMBLED LAVA ROCK  
2-3" PIECES | GREY

## CONCRETE BOWL COLORS AND FINISHES\*

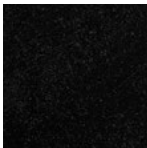
### Standard Concrete



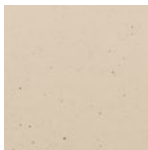
SAHARA



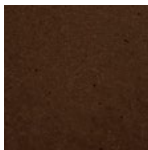
STONE GREY



EBONY



NATURAL



BEECHWOOD

### Premium Concrete



BURNT TERRA  
COTTA



DARK WALNUT

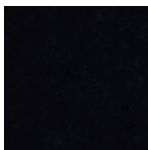


CHARCOAL GREY

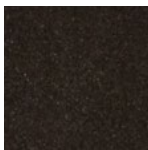


SEQUOIA

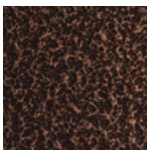
## METALLIC BOWL COLORS AND FINISHES\*



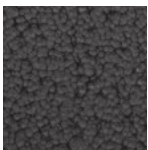
BLACK



BRONZE



COPPER VEIN



GREY  
HAMMERTONE



ALMOND



SLATE



SAND



HAMMERED  
COPPER WITH  
OIL-RUBBED  
FINISH

\*See actual samples when making color and finish choice. Finished product may vary.



# CUSTOMIZE YOUR POOL

Create the outdoor ambiance of your dreams, whether it be an enchanting oasis, kid-friendly water park, or exotic poolside backdrop. The possibilities are endless when utilizing the wide range of Jandy® water features.



## SHEER DESCENT® SERIES

Uniquely created to produce a clear arc of water that can be adjusted from a silent, glass-like sheet of water to a rushing mountain waterfall, Sheer Descent is the industry standard – unequaled in features and performance. Each feature is available in lengths from twelve inches to eight feet with the option of curved and extended lip models.



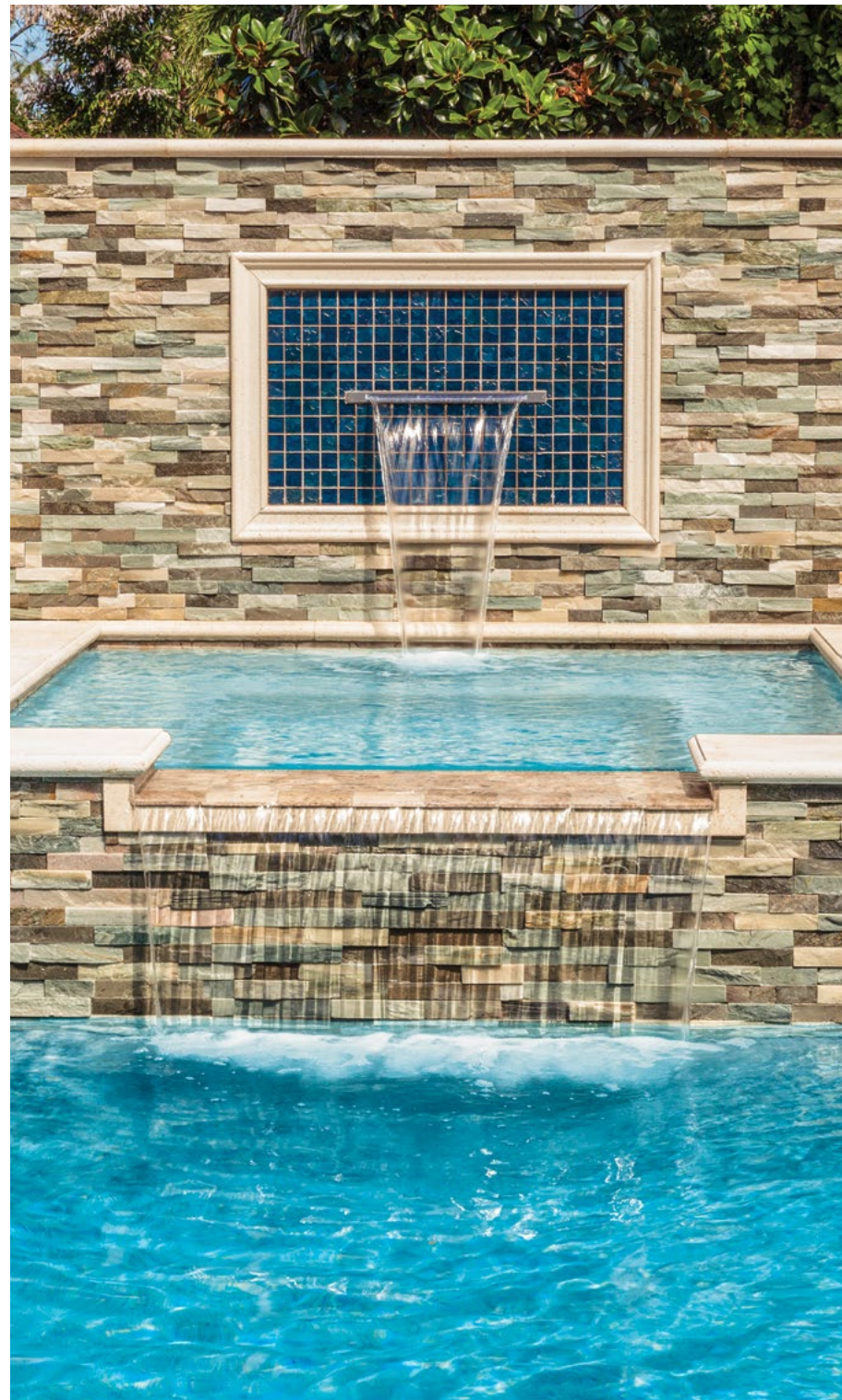
SHEER CURTAIN™



SHEER DESCENT RAIN

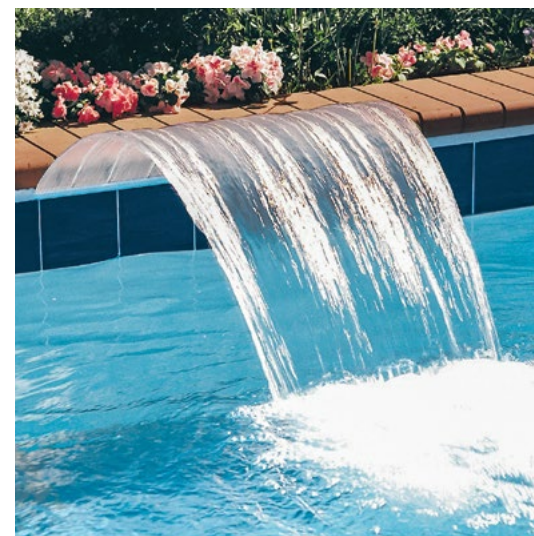


SHEER DESCENT CASCADE



## SHEER ARC™ SERIES

Arc waterfalls project up at 45 degrees and then naturally arc and descend to the pool surface. Sheer Arc water falls can be positioned just above the waterline, making it perfect for vinyl liner pools. This feature is available in Sheer Arc Cascade.



SHEER ARC CASCADE





**THE JET SERIES**  
Deck Jets add excitement and fun to your pool and spa experience. They create a beautiful shimmering arc of water that cascades gently from your pool deck into your pool or spa. The Deck Jets can be installed in almost any combination and adjusted 360 degrees, allowing for infinite combinations of dazzling effects.

DECK JET



**LIGHTED BUBBLER**  
The Lighted Bubbler has the ability to synchronize with the colors in the rest of the pool, adding significantly to the visual experience while the soft, bubbling sound provides a soothing atmosphere.



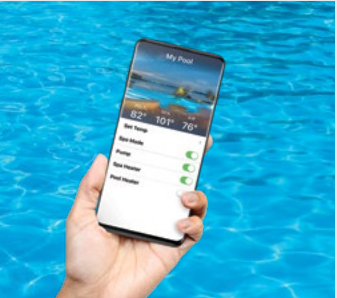
LAMINAR JETS WITH LED



MINIJET®



**KEEP YOUR POOL EFFICIENT**  
When installing Sheer Water Features with AquaLink® Automation systems and Cover-Pools® automatic pool covers everything works together to ensure that when the cover is closed, the water features will automatically turn off.



**WHERE POOLS MEET TECHNOLOGY**  
iAquaLink® allows you to control your pool anytime, anywhere. Using our free app for your smart phone or web-connected device, you can control all the elements of your pool or pool/spa system, including waterfalls, spillovers, and laminar jets, even when you're on the go.



# WITH A POOL COVER, YOU GET PEACE OF MIND

With a Cover-Pools automatic pool cover you get peace of mind with the simple turn of a key. Your Cover-Pools cover acts as a “horizontal fence” for your pool, preventing access by children, pets, and uninvited visitors. It’s a safety barrier that no pool should be without.



## PROTECT YOUR POOL AND YOUR LOVED ONES

# SAVE UP TO 70% ON OPERATING COSTS




The U.S. Department of Energy states\* that a pool cover is, “the single most effective means of reducing pool heating costs.” Cover-Pools covers have proven to be one of the best ways to reduce pool expenses all year long.



\*Energy.gov/EnergySaver/Swimming-Pool-Covers



FOR INDOOR POOLS, A COVER PROVIDES THE ADDED BENEFIT OF ELIMINATING THE NEED FOR EXPENSIVE DEHUMIDIFICATION SYSTEMS.



-  **Saves energy, adds heat.**  
A Cover-Pools cover dramatically reduces heating costs and extends your swimming season by acting as a giant solar collector.
-  **Saves water and chemicals.**  
By reducing evaporation, your Cover-Pools cover cuts water loss and reduces the use of chemicals.
-  **Saves cleaning.**  
Minimize the time and effort spent cleaning out dirt, leaves and debris when using an automatic pool cover.

-  **Saves pool equipment, extends pool life.**  
With a covered pool, you keep the heat in and the dirt and debris out. Heaters and other pool equipment work less and last longer.
-  **Saves money.**  
By saving heat, chemicals, cleaning, and extending equipment life, your Cover-Pools cover quickly pays for itself. You can save up to 70% on operating costs, which is a great return on your investment.



# ANY POOL, ANY SHAPE – COVER-POOLS HAS YOU COVERED



VANISHING EDGE POOL AND SPA

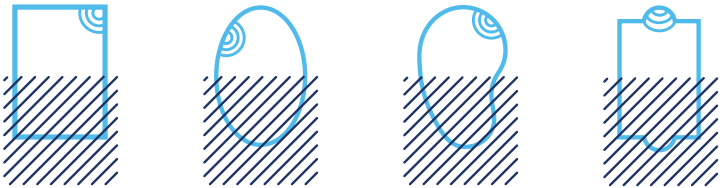


RECTANGLE POOL WITH BUBBLER WATER FEATURE



POOL WITH RAISED WALL

WE CAN COVER YOUR  
POOL NO MATTER  
WHAT THE SHAPE.



DECK-ON-DECK POOL



POOL WITH ROCK FEATURES AND WATERFALL



DECK-ON-DECK POOL AND SPA WITH ROCK FEATURES AND WATERFALL



PERIMETER OVERFLOW POOL



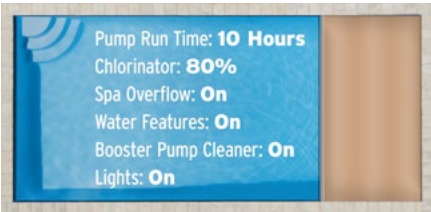
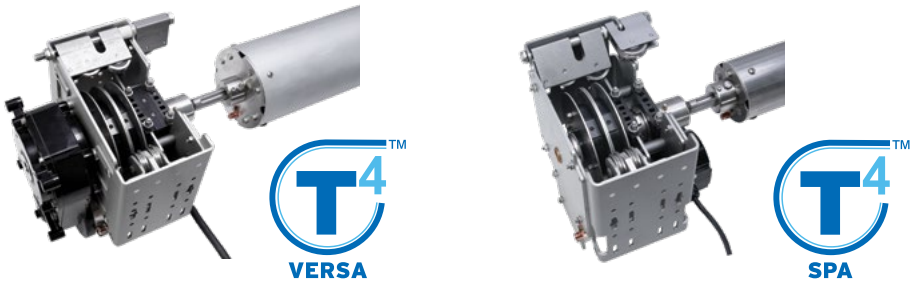
L-SHAPED POOL WITH TWO COVERS AND SPA



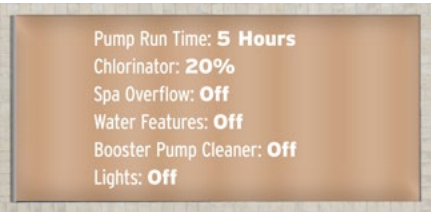
# MOTOR AND MECHANISM

Only automatic pool cover manufacturer offering high strength stainless steel cable and traditional rope

Create a more seamless pool or spa design with the T4™ line of durable and compact mechanisms and motors. The latest T4 Versa and T4 Spa feature a space-saving offset motor design requiring only a 14-inch or 11-inch motor side box length, respectively, to fit under standard 14-inch coping.



POOL COVER OPEN



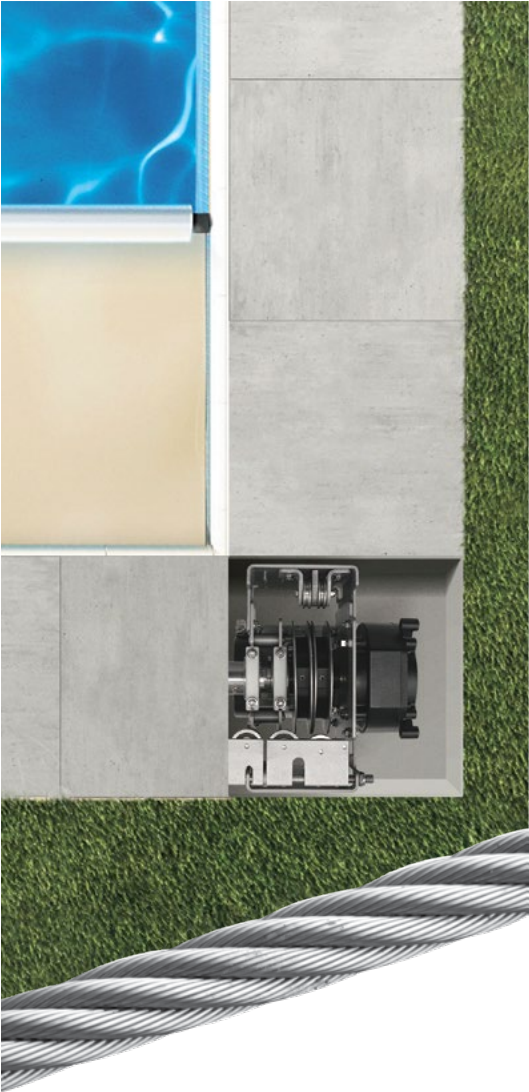
POOL COVER CLOSED

## AquaLink®

### AUTOMATION INTEGRATION

When using Cover-Pools’ Auto-Shutoff Interface Board and Jandy’s AquaLink control system, pool cover owners can control other pool features based on the position of their cover.

For example, when the cover is closed, AquaLink can automatically deactivate any lights and water features, limit chlorine output and reduce pump run time, saving up to 50% of energy and chemical use.



### DURABILITY

High-strength stainless steel cable offers superior durability in a smaller footprint. Stainless steel cable doesn’t shrink or stretch like traditional rope so it virtually eliminates service calls due to misaligned covers.



# QUALITY, HIGH-TECH FABRICS

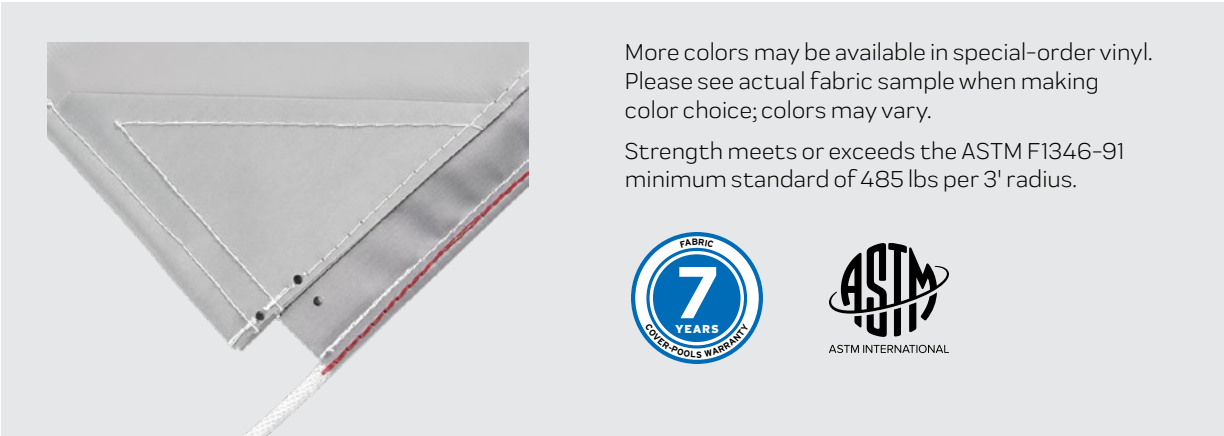
### QUAD-CORE FABRIC

Quad-Core laminated fabric is exclusive to Cover-Pools. Made for pool and spa covers, Quad-Core is reinforced with a strong polyester mesh for strength and tear resistance, this high-performance vinyl-resin formula provides maximum durability in the swimming pool environment.



### PRO-COAT FABRIC

Pro-Coat coated fabric uses an enhanced coated formula for the pool and spa environment that provides long-lasting durability with UV protection, advanced tensile strength and exceptional resistance to abrasions, tears and chemical deterioration.



More colors may be available in special-order vinyl. Please see actual fabric sample when making color choice; colors may vary.

Strength meets or exceeds the ASTM F1346-91 minimum standard of 485 lbs per 3' radius.





# LIDS AND BENCHES



### DECK-MOUNTED MECHANISM

When mounting a mechanism to the deck an Everlast Bench or Everlast Ends provide convenient and durable protection. You can also create your own bench design with our bench frames and materials supplied locally by your dealer or an independent contractor.

### RECESSED MECHANISM

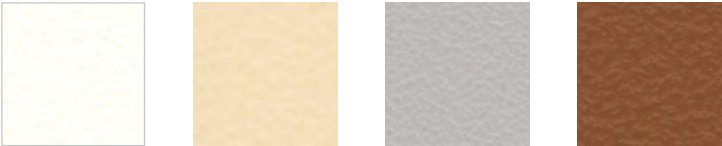
The mechanism can be discretely housed in a box below the deck surface. This option works best if chosen before construction. However, if there is room to cut into the deck of an existing pool, the mechanism can still be recessed. Cover-Pools offers many lid options for covering the mechanism.



EVERLAST BENCH



EVERLAST ENDS



WHITE TAN GRAY TERRA COTTA

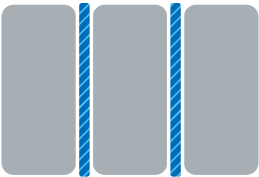
Four Everlast polymer colors are available. Please see actual polymer samples when making color choice. Colors may vary.

### Corr-Resist™ Technology

Swimming pool chemicals, including chlorine and salt, can accelerate corrosion of pool equipment. Cover-Pools pool cover components are built with Corr-Resist technology including using a combination of stainless steel, anodized aluminum and high-density polymers to prevent this type of damage and extend equipment life.



GALVANIC CORROSION OCCURS WHEN DIFFERENT METALS TOUCH

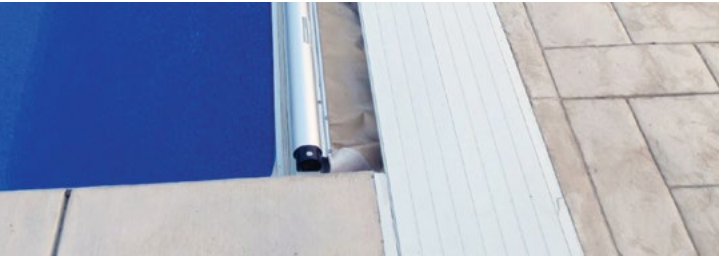


CORR-RESIST TECHNOLOGY SHIELDS METALS FROM CORROSION



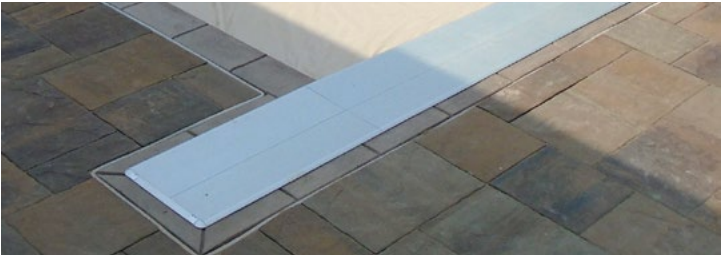
### ALUMINUM LID

Our standard lid for both Universal track and Underside™ track systems offers an economical way to conceal and protect the mechanism (not intended to be walked on).



### FLUSH-MOUNT LID

Our flush-mount lid is a walk-on lid that completely covers a recessed pool cover mechanism while remaining even with the surface of the deck.



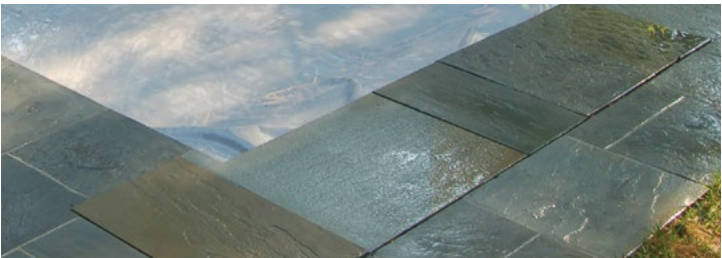
### FLAT BEZEL™ LID

Designed for Underside track systems, the flat Bezel lid gives step-on strength with a more streamlined appearance and beveled edges.



### TILTED BEZEL LID / STEPPED BEZEL LID

The tilted or stepped (shown) Bezel lid for Universal track systems features step-on strength with a narrow tilt or low-profile rise to accommodate the track. It also has beveled edges.



### VANISHING LID™

The Vanishing Lid provides the most integrated look for concealing the mechanism. Your coordinating deck material hides the mechanism housing and blends into the rest of the deck.



### EXTENDED VANISHING LID

The extended Vanishing Lid system is designed to allow the cover to retract completely under the lid. This requires the lid system to be 18" to 24" wide.



SKY WHITE AUTUMN WHITE ALMOND COFFEE TAN CAMEL GRAY 240 ASA-61 P GRAY STATUARY BRONZE

All aluminum lids can be powder coated to coordinate with your deck. Choose from a selection of standard colors or special-order colors. Please see Powder-Coated Extrusion samples when making color choice. Colors may vary.



# OWN THE SELF-CLEANING POOL YOU'VE ALWAYS DREAMED OF

Imagine a pool that efficiently cleans itself, better circulates water, and saves money while giving you more time to enjoy it.



Each Jandy in-floor cleaning system is custom designed for the unique size and shape of your pool. It is installed to fit flush with your pool floor, making it virtually invisible to the eye as it continuously works to keep your pool clean and water properly circulated and chemically balanced. The Jandy in-floor cleaning system replaces vacuum hoses and other stand-alone pool cleaners so your pool area is uncluttered and always ready to be enjoyed.



## HOW DOES IT WORK?

Water is directed by a Jandy in-floor valve to cleaning heads located strategically throughout your pool.

**CLEANS  
99%  
OF YOUR POOL\***

During each cleaning cycle, a group of two or more heads rises slightly from the floor to project a powerful stream of water that propels debris towards the main drain.

This thorough process efficiently cleans 99% of your pool while circulating water, chemicals, and heat in a fraction of the time it would take other pool cleaning systems.

▶ **Watch how it works at [Jandy.com/In-Floor](https://www.jandy.com/in-floor)**

\*Results may vary based on pool design.

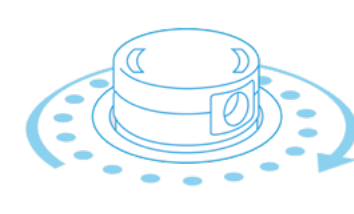
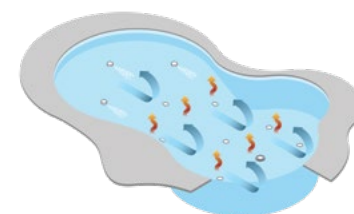


## Superior Circulation

Most pools circulate water from surface inlets, resulting in the loss or uneven distribution of valuable chemicals, heat and filtered water. Poor circulation can also contribute to algae and bacteria growth. A Jandy In-Floor system prevents this by automatically distributing chemicals, heat and clean water throughout the entire pool.

## Maximum Cleaning Coverage

Jandy In-Floor cleaning heads rotate through an industry-most 18 positions in a full 360° efficiently ridding the pool of debris ensuring complete and reliable coverage.



## Saves Energy and Money

A Jandy In-Floor system requires less equipment runtime resulting in energy and chemical savings significantly reducing annual maintenance costs. And don't forget to count the time and money you would have to spend purchasing and manually operating a stand-alone pool cleaner.

## Custom Designed and Adaptable

Each Jandy In-Floor system is custom designed for each pool utilizing a combination of six available nozzle sizes ensuring maximum flow to unique features of each pool including steps, benches or swim outs.







## CLEANING HEAD COVERS



\*Tan and Light Blue are only available for 2 1/2" Collars. Dark Blue is available only for vinyl pools. White is available for use in vinyl pools.

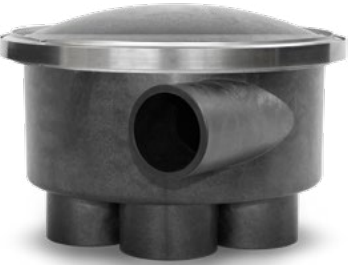
## NOZZLES



## VALVES



**POWERHOUSE™ 8-PORT VALVE**  
This high-efficiency 8-port valve boosts pool cleaning capacity to a level that no competitor can touch. Perfect for larger pools, this valve is the only electronic 8-port valve on the market. No other valve provides customizable run times, quicker cleaning and less energy use.

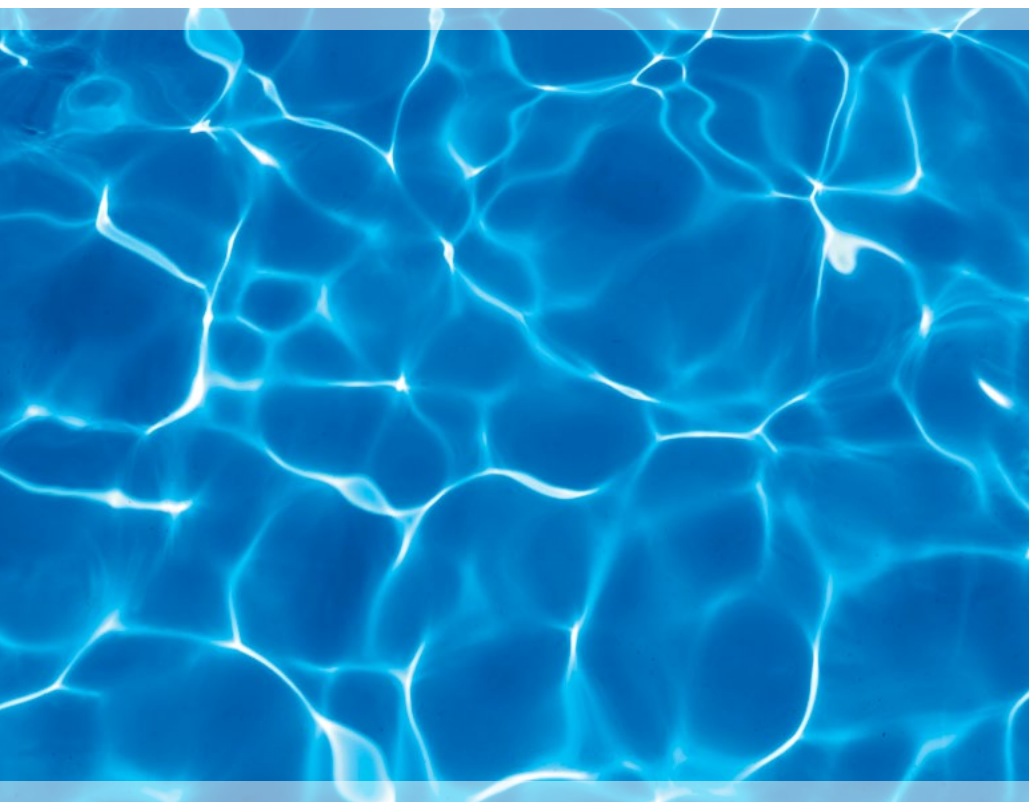


**JANDY® REVOLUTION™ 6-PORT VALVE**  
The Revolution 6-port valve is the most efficient and easiest to service hydraulic valve we have ever built! The industry-exclusive shifting mechanism, we call QuickFlow™, maximizes the time of full cleaning pressure to each zone more efficiently than any hydraulic valve we have tested. A new one-piece gear cassette also makes the valve easier than ever to service and maintain.



**WORKHORSE™ 5-PORT VALVE**  
Considered the workhorse of the industry, this valve has long provided pool owners with a dependable and efficient in-floor cleaning system. Ideal for smaller pools or spas, the 5-port valve maximizes power to give your pool a robust and thorough cleaning.





FluidraRewards.com | 1.800.822.7933

©2021 Zodiac Pool Systems LLC. All rights reserved. ZODIAC® is a registered trademark of Zodiac International, S.A.S.U., used under license. All other trademarks and trade names are the property of their respective owners. Computer and mobile devices not included. The copying, redistribution, use or publication of any of the trademarks or tradenames owned by Zodiac Pool Systems LLC or our affiliated companies, except as expressly agreed to in writing by Zodiac Pool Systems LLC, is strictly prohibited. 5987\_SA